



EVAX FIRE 1 y FIRE 2

La inteligencia en un panel ahora le costará menos

Nuestra empresa se complace en introducir en Argentina el tablero de incendios: EVAX FIRE. En sus dos versiones, FIRE 1 y FIRE 2 Usted podrá ahora instalar un sistema de detección inteligente en su empresa con una inversión tan pequeña y con un desempeño tan alto que su compra será tan inteligente como nuestros paneles. Pida información hoy mismo. Compatible con detectores Apollo, System Sensor y Wizmart

EVAX 1 FEATURES:

- 🔥 Digital Addressable
- 🔥 Addressable & Conventional inputs
- 🔥 Modular in design
- 🔥 126 Addressable devices per Loop
- 🔥 8 Addressable Loops
- 🔥 1008 Addressable Devices
- 🔥 15 remote LCD Annunciators
- 🔥 Day / Night sensitivity settings
- 🔥 Alarm Verification
- 🔥 Automatic Drift Compensation
- 🔥 4 Option Power Supply
- 🔥 4 NAC circuits
- 🔥 7 Amps Power Supply
- 🔥 Remote programming option
- 🔥 Panel to Panel Network capable
- 🔥 Holiday Scheduling
- 🔥 Set up Groups
- 🔥 60 Conventional Zones
- 🔥 6,000 ft extended addressable loop option
- 🔥 Flash Non-Flash LED option
- 🔥 Constant Power option

EVAX 2 FEATURES:

- 🔥 Digital Addressable Loops
- 🔥 Addressable & Conventional inputs
- 🔥 Modular in design
- 🔥 126 Addressable devices per Loop
- 🔥 2 Addressable Loops
- 🔥 252 Addressable Devices
- 🔥 25, 50, or 100 Watt Audio Output
- 🔥 Up to 8 Class "B" Speaker Circuits
- 🔥 Audio All Call
- 🔥 Built in Alert & Alarm Signals
- 🔥 3 minute Message Capacity
- 🔥 Live Microphone Override
- 🔥 15 remote LCD Annunciators
- 🔥 Day / Night sensitivity settings
- 🔥 Alarm Verification
- 🔥 Automatic Drift Compensation
- 🔥 4 Level Power Supply
- 🔥 4 NAC circuits
- 🔥 7 Amps Power Supply
- 🔥 Remote programming option
- 🔥 Holiday Scheduling
- 🔥 Set up Groups
- 🔥 Flash Non-Flash LED option
- 🔥 Constant Power option

FEATURES:

- Digital Addressable
- Addressable & Conventional inputs
- Modular in design
- 126 Addressable devices per Loop
- 8 Addressable Loops
- 1008 Addressable Devices
- 15 remote LCD Annunciators
- Day / Night sensitivity settings
- Alarm Verification
- Automatic Drift Compensation
- 4 Option Power Supply
- 4 NAC circuits
- 7 Amps Power Supply
- Remote programming option
- Panel to Panel Network capable
- Holiday Scheduling
- Set up Groups
- 60 Conventional Zones
- 6,000 ft extended addressable loop option
- Flash Non-Flash LED option
- Constant Power option

DESCRIPTION

The Evax Fire 1 Fire Alarm Control Panel (FACP) is a completely modular design that can be addressable and/or conventional. The basic FACP comes with 2 addressable Signaling Line Circuits (SLC) and can be expanded to 4 addressable loops in the same cabinet. In addition to the four (4) loops being housed in the main cabinet of the Fire 1 two (2) additional SLC loop cards can be remotely added to the system.

These remote SLC loop cards can be mounted up to 6,000 feet from the main FACP. The Fire 1 is also capable of controlling conventional fire inputs (zone) in increments of 10 zones per input card (maximum of 60 conventional zones). Each addressable SLC loop can handle addressable input/output device monitoring and/or control 126 devices per loop for a total of 1008 addressable devices.

The Fire 1 FACP has the ability of remotely troubleshooting and or programming the panel through the use of an optional modem installed at the FACP (you must following NFPA guidelines for testing when this option is used).

FIRE 1 Addressable Fire Alarm Control Panel



The Fire 1 can *auto program* devices on an addressable loop or program conventional zones on your system. Additionally the Fire 1 provides automatic drift compensation and is easily programmed from either the Fire panel or through the user friendly Evax system program software. The Fire 1 FACP also has alarm and trouble contacts rated at 10A @ 30VDC, 10A @ 240VAC resistive, 3A @ 240VAC inductive.

The equipment described in this document is listed by Underwriters Laboratories, Inc. for use in fire alarm signaling systems, only when installed in accordance with the installation manual and the latest National Fire Protection Association Standards NFPA 72; the National Electrical Code (NFPA 70); the Life Safety Code (NFPA 101); and/or the local authority having jurisdiction (AHJ). It is possible to apply system components incorrectly or arrange system components and installation wiring so that required life safety functions are NOT performed. As a result, lives may be lost.

To minimize this possibility:

DO NOT deviate from any manufacturers instructions.

DO NOT assume any installation details not shown in instruction manual, code, and/or requirements of the

Authority Having Jurisdiction (AHJ) in the locale of the

installation

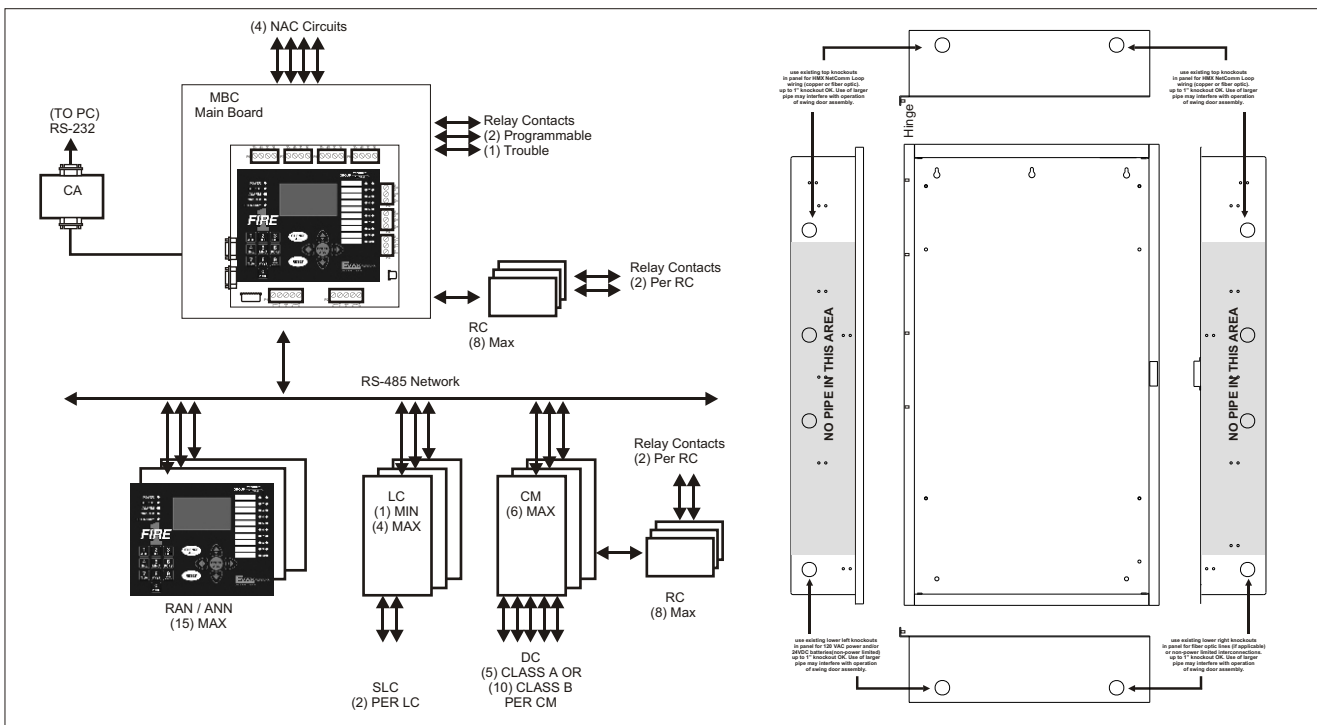
DO NOT alter any mechanical or electrical features of the

equipment supplied

BE FAMILIAR with the building code, fire prevention code,

and/or requirements of the Authority Having Jurisdiction

(AHJ) in the locale of the installation



How to Order:

- EF1-2FACP 2 Loop Addressable FACP w/Cab 120vac
- EF1-2FACP220 2 Loop Addressable FACP w/Cab 220vac
- EF1-10CFACP 10 Zone Conventional FACP w/Cab 120vac
- EF1-10CFACP220 10 Zone Conventional FACP w/Cab 220vac
- EF1-FACP-CAB Fire 1 Cabinet only (backbox & door)
- EF1-2EXP 2 Addressable Loop expander w/cab
- EF1-LC 2 Addressable Loop expander board only
- EF1-EXP5RC 10 Class B or 5 Class A Zone Conventional expander w/Cab and one relay board
- EF1-10CM 10 Zone Conventional expander Board only
- EF1-EXPDR-CAB Expander Cabinet only (backbox & door)
- EF1-ANN Remote LCD/LED Annunciator in Cabinet
- EF1-RAN Remote LCD/LED Annunciator Board only
- EF1-A-CAB Remote Annunciator Cabinet only
- EF1-MBC-120 120V Common System components (MMC, PDC-UL, FPC & Power Supply)
- EF1-MBC-220 220 V Common System components (MMC, PDC-UL, FPC & Power Supply)
- EF1-RLT2C 2 Form C relay board
- EF1-RCCBL Flat ribbon cable for the EF1-RLT2C to comm board
- EF1-MOD Remote communication Modem
- EF1-DACT-R Universal DACT for Central Station Transmission
- EF1-CA PC Communication Adapter
- EF1-KIT Mounting Hardware kit for Expander panels
- EF1-CA-CBL EF1-CA - 9-Pin Communication Cable

Engineering Specification

The Fire Alarm Control Panel (FACP) shall be Addressable loop and Conventional Zone capable. Standard FACP shall be two (2) loops of addressable circuits expandable to eight (8). The system shall be capable of 126 addressable devices per loop for a total of 1008 addressable devices. Each expander module shall add an addition 2 addressable loops or 10 conventional zones. These expander cards shall be housed in their own cabinets and be capable of being remotely located up to 6,000 feet from the main FACP. The main FACP shall communicate with addressable devices in a digital format, analog communications will not be accepted, system shall have auto program capability, sensitivity adjustments, day/night sensitivity, holiday scheduling, off site programming and troubleshooting, shall be capable of adding internal Form "C" relay contacts housed in the main FACP cabinet, and be capable of automatic drift compensation. System shall be programmed using propriety software or from the main FACP. Panel shall have the ability to add up to 15 remote LCD/LED Annunciators and have the option for digital communications. Panel shall charge up to 40 Amps of standby batteries without the use of an external power supply. The panel shall contain four (4) on-board Notification Appliance Circuits (NACs) that support multiple synchronization protocols and can be programmed auxiliary power. The panel shall utilize a 68 x 128 character Liquid Crystal Display (LCD) with LED backlight and a 1,000-event history log. The panel shall be an Evax Fire 1.

Specifications are subject to change without notice. Specifications are provided for information only and no responsibility is assumed by Evax Systems, LLC for their use.

